

MCGINTY CONVEYORS



"Zig-Zag" Powered Chain Conveyor Systems

Distributors of Overhead - Power & Free - Floor - Rotary - & Custom Conveyors
"We Service What We Sell"

Introduction

We are pleased to provide this catalog for your reference.

However, McGinty Conveyors, Inc. has much more to offer than what is shown on these pages. Having been a leader in the material handling industry since 1946, it would be impossible to list all of our products and services.

We invite you to contact us on any material handling need you might have regardless of how small or large. We would be more than happy to work with you.

On behalf of the staff at McGinty Conveyors, Inc., thank you for your business and interest in our company.

John McGinty, Sr.
President

Material Handling That's Powered from Start to Finish

Zig-Zag, invented in 1938, is the original enclosed track conveyor. Since then, McGinty has continued to refine the product, which today still sets the industry standard for effective material handling equipment.

Using standard modular components constructed for long life, Zig-Zag conveyors solve a variety of manufacturing problems. From simple, in-line finishing systems to complex storage and retrieval systems, Zig-Zag is an efficient and economical solution.

Table of Contents

Section	Page
Introduction & Table of Contents	2
Track	3
Chain	3
Drive Units	3
Take-Up Assemblies	4
Expansion Sleeve	4
Inspection Section	4
Pendants	5
Benefits	6
Basic Zig-Zag System	6
Warranty	7



McGinty Conveyors, Inc. - Creating innovative material handling solutions since 1946.

Track

The Zig-Zag powered chain conveyor systems use track to provide the runway. The track is a tubular section formed from straightened and squared plate steel. Two different weights of track are used.

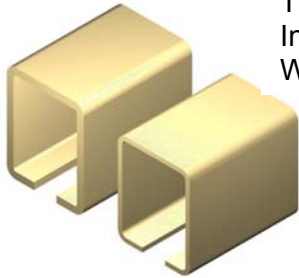
The TR-471 track, at 5 pounds per foot, the heaviest in the industry, provides added stability and greater rigidity over longer spans, requiring fewer track supports. The TR-802 track is lighter than the TR-471 track, weighing 3.5 pounds per foot. The lighter weight track reduces the “dead load” on track hangers and building support structures.

Both tracks are available as painted or unpainted at 10'-0" lengths, or stainless steel at 5'-0" lengths.

TR-471 Track

Inside Dims: 1-3/4" x 2-5/16"

Wall Thickness: 3/16"



TR-802 Track

Inside Dims: 1-3/4" x 2-5/16"

Wall Thickness: 11 Ga.

Chain

Designed for maximum flexibility, the Zig-Zag chain consists of a series of alternating vertical wheel and lateral roller units, with wheels on 6" centers, and a maximum chain pull capacity of over 600 pounds. Detachable at any point, this universal-joint like chain handles short radius vertical and horizontal curves with equal success.

The vertical wheel units consist of two pressed steel frames connected by an axle and load bar. The lateral units consist of forged steel links fitted with pressed steel wheels. The units are connected by alloy pins and hardened steel rollers which take the tensile loads in all directions.

CH-1974 Zig-Zag Chain



Drive Units

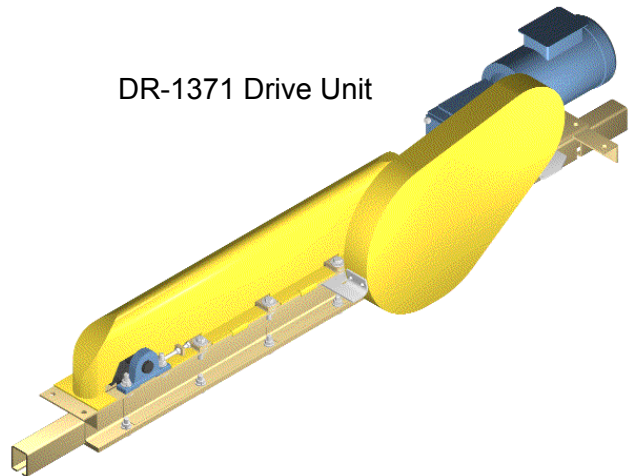
Using the principle of variable frequency, the Zig-Zag multiple drive and single drive units are a dependable source of power which provides automatic load sharing of two or more drive units, while at the same time giving centralized remote speed control.

A solid state variable frequency motor speed control (VFMS) is used to convert 60 Hz. Plant power into variable frequency power. Motor speed is then directly proportional to the frequency supplied by the controller. Speed variation of approximately 5 to 1 can be provided within the capabilities of standard motors and controls.

Load sharing between drives in multiple drive conveyors is accomplished through control features built into the VFMS.

Adequate protection is provided for reasonable momentary overloads, and the assembly is also equipped with a friction clutch for protection against excessive overload. All units have 600 pound capacity, with speed variables ranging from 6 to 60 inches per minute, up to 8 to 45 feet per minute.

DR-1371 Drive Unit



DR-1373 Skeleton Drive Unit



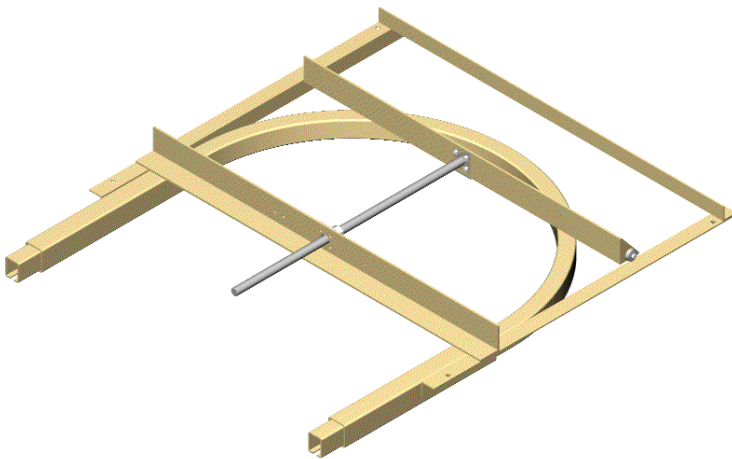
Take-Up Assemblies

Some type of tensioning is necessary on all chain conveyor systems to take up slack created by wear or temperature change.

Framed Take-Up Assembly

Factory made, ready to be hoisted and hung, this frame provides a rigid base for easy alignment. The frame is permanently mounted; only the actuator and conveyor track move. Tensioning is accomplished with your choice of hardware for screw, spring, or air cylinder operation. Maximum track spread of 10'-0".

TU-1687 Framed Take-Up
Shown with optional TU-2685
Screw Package



Screw Take-Up Assembly

Screw-type take-ups should be used on practically every installation for maintaining the tension on the conveyor chain. The screw take-ups are designed to provide 1'-6" of total adjustment.

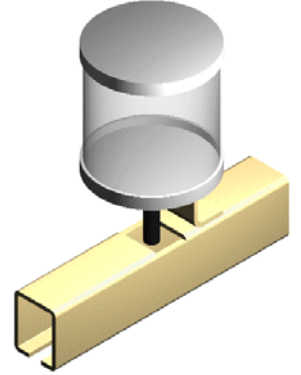
Air/Spring Take-Up Assembly

Air cylinder or spring take-ups are used where there is extensive fluctuation in slack chain caused by extreme temperature variations, and on level systems where the slack chain must be constantly and automatically controlled.

Lubricator

Lubrication plays an essential part in the up-keep of all conveyors. Proper lubrication can extend the life of the conveyor chain.

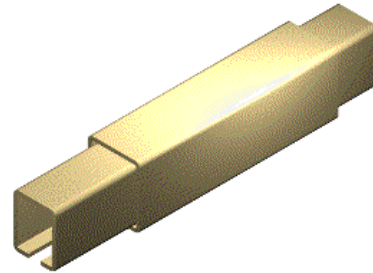
LU-669 Electro-Brush Oiler



Expansion Sleeve

Expansion sleeves are used mainly in bake ovens and are located in each track in the area of the oven expansion joint. This allows both oven and conveyor to expand and contract in unison. Many ovens, depending on length and temperature, do not have expansion joints. In such cases, it is often advisable to use an expansion sleeve at the exit and entrance tracks to prevent snaking or waviness in the track both inside and outside the oven.

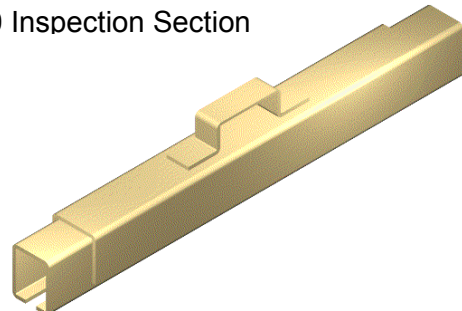
TU-1114 Expansion Sleeve



Inspection Section

The inspection section facilitates inspection and maintenance at points other than the drive unit. The unit allows full inspection of the chain for proper lubrication, chain tension, and general condition. The inspection section also permits easy installation and removal of chain. The most desirable location is at the lowest point between the output of the drive unit and the take-up unit.

TR-820 Inspection Section



Pendants

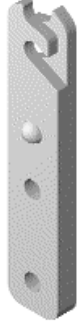
We have developed a series of standard load carrying devices designed to cover the essential requirements for connecting the load to the conveyor chain.

Since the ultimate device required to carry the load on the conveyor must be specially designed to fit the article which is being handled, it is almost impossible to illustrate a load pendant for every problem. It is also desirable in many cases to experiment with various types of load carriers before finding the one most satisfactory for the job.

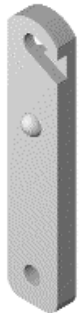
PE-316 Rigid Clevis Pendant



PE-317 Rigid Straight Side Pendant



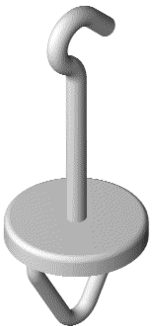
PE-318 Straight Side Pendant



PE-319 Standard Clevis Pendant



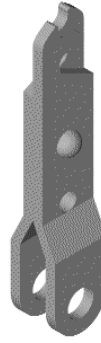
PE-198 Swivel Fixture Pendant



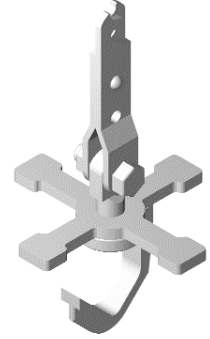
PE-2775 Spin Hook Pendant



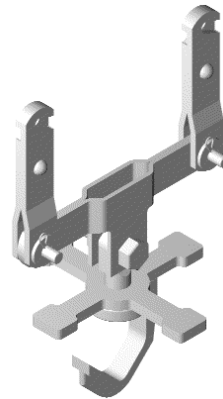
PE-2694 Pendant for Cast Hook



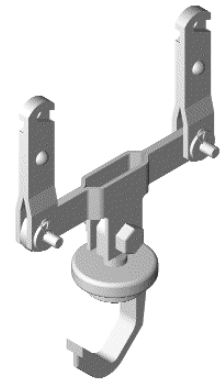
PE-2693 Single Suspension Indexing Load Hook



PE-2699 Double Suspension Indexing Hook



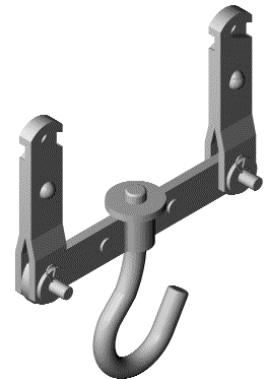
PE-2702 Double Suspension Rotating Hook



PE-2706 Single Suspension Load Hook



PE-2772 Double Suspension Load Bar Hook



PE-264 "V" Pendant

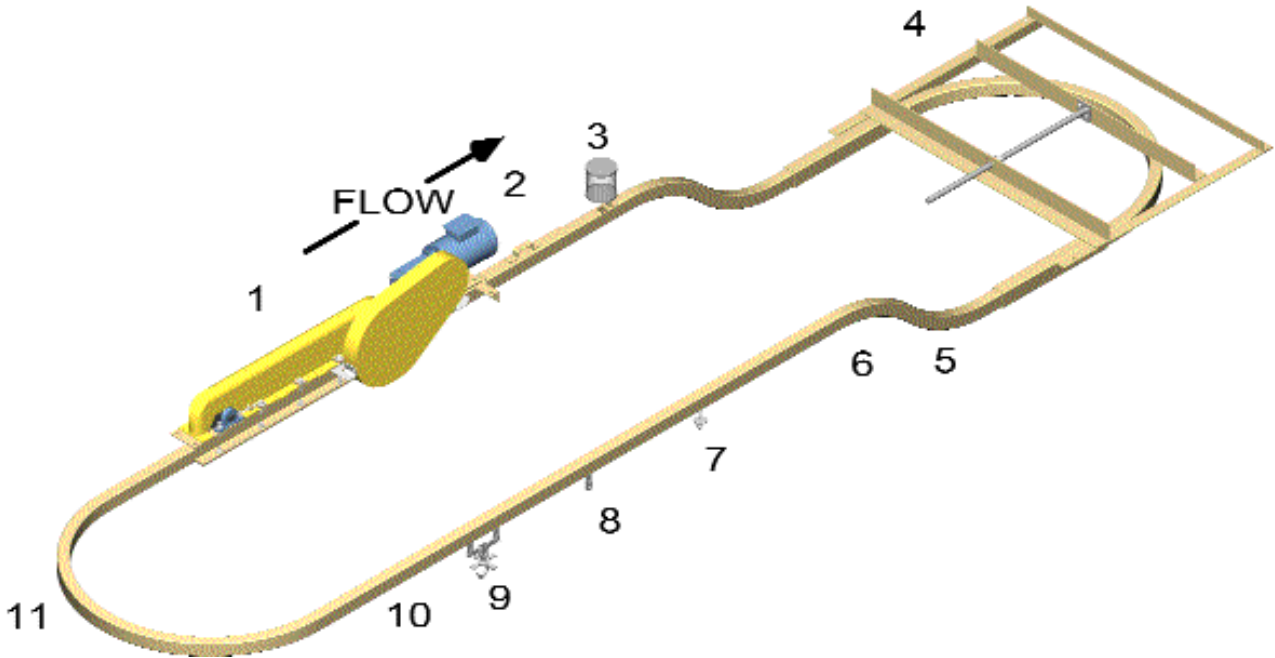


Benefits:

- Zig-Zag's enclosed track protects product from contamination that typically falls from open chain conveyors. Zig-Zag also protects the chain from airborne dirt, abrasives and solvents, prolonging chain life.
- Zig-Zag is constructed of standard, modular components that guarantee easy installation, modification and maintenance.
- Zig-Zag's standard 1'-6" horizontal and 2'-0" vertical curves can make tight changes in direction and elevation, freeing up valuable floor space for other assembly and storage operations.
- Zig-Zag was designed to meet manufacturers' changing needs. As a result, it is the only overhead chain conveyor that can be upgraded to a power and free system utilizing all existing components.
- Zig-Zag chain has a pitch of 6" and is shortest in the industry. This allows up to 33% more productivity. The pitch of our chain allows you to space load pendants closer with less wheel loading, allowing for more product throughput. This shorter pitch also allows for tighter radius horizontal curve.

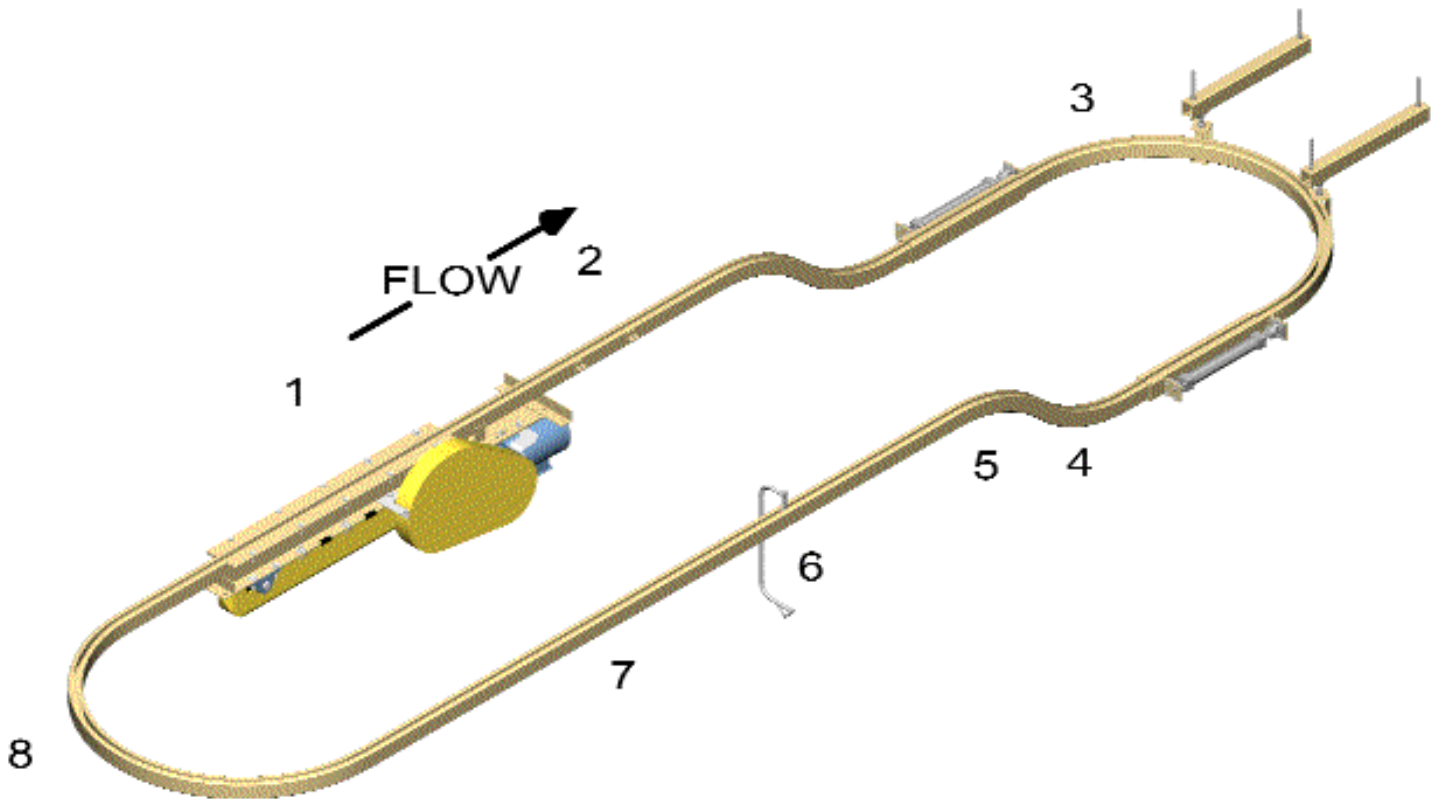
Basic Zig-Zag System

Tag #	Part #	Description
1	DR-1371	Drive Unit, 3-16 FPM, 3/4 HP Inverted Duty Motor
2	TR-820	Inspection Section
3	LU-669	Electro Brush Oiler, 120VAC
4	TU-1687	Framed Take-Up Assembly With TU-2685 Screw Package (Chain Tension)
5	CU-2759	Bottom Vertical Curve, 2'-0"R x 45°
6	CU-2757	Top Vertical Curve, 2'-0"R x 45°
7	PE-198	Swivel Fixture Pendant
8	PE-316	Rigid Clevis Pendant
9	PE-2699	Double Suspension Indexing Hook
10	TR-471	Straight Track, 3/16" Thick, 10'-0" Long
11	CU-2679	Horizontal Curve, 2'-0"R x 180°



Basic Inverted Zig-Zag System

Tag #	Part #	Description
1	DR-2815	Inverted Drive Unit, 3-16 FPM, 3/4 HP Inverted Duty Motor
2	TR-2334	Inverted Inspection Section
3	TU-2328	Inverted Air Take-Up Fittings
4	CU-2757	Top Vertical Curve, 2'-0"R x 45°
5	CU-2759	Bottom Vertical Curve, 2'-0"R x 45°
6	CA-2817	Inverted Light Duty Load Hook
7	TR-471	Straight Track, 10'-0" Long
8	CU-2843	Inverted Horizontal Curve, 2'-0"R x 180°



Warranty & Limitation of Liability

Seller warrants Purchaser that the material and workmanship of its equipment is of good quality and free from defects. Seller agrees to furnish the Purchaser, without charge, F.O.B. Seller's plant at Indianapolis, Indiana, or F.O.B. Distributor's stock, a replacement part for any part or parts of the equipment proving defective in either material or workmanship within a period of one (1) year from date of shipment, BUT THIS SHALL BE OF NO FORCE AND EFFECT UNLESS: Purchaser gives seller immediate notice of defective part or parts; Purchaser affords Seller opportunity to inspect defective part or parts; material is still property of original owner; material is still part of the original installation operating under normal usage (eight (8) hours per day, five (5) days per week constitutes normal usage); and material is properly maintained and lubricated.

Seller's LIABILITY UNDER THIS WARRANTY SHALL BE LIMITED TO FURNISHING PART OR PARTS AS NECESSARY. ANY EXPENSE RELATIVE TO INSTALLATION SHALL NOT BE BORNE BY SELLER. EQUIPMENT DAMAGED AS A RESULT OF EXPOSURE TO CORROSIVE OR ABRASIVE SUBSTANCES SHALL NOT BE REPLACED UNDER THIS WARRANTY. THE ABOVE WARRANTIES DO NOT COVER PARTS WHICH, UPON INSPECTION, ARE DETERMINED BY SELLER TO HAVE BEEN SUBJECT TO MISUSE, NEGLIGENCE ALTERATIONS, ACCIDENT ABUSE, DAMAGE OR DAMAGE BY FIRE, FLOOD OR OTHER SIMILAR CASUALTY. Seller reserves the right to install or to supervise any adjustment incidental to the satisfactory operation of the equipment.

Seller does not warrant parts or components not of its manufacture. The manufacturers of electric motors and controls, air and hydraulic components and certain other items extend a one (1) year warranty.

Defective material of this type must be reported to the Seller for appropriate action through vendor. Our sole responsibility is to notify vendor of complaints.

This writing is intended by Seller and the Purchaser as a final expression of warranties to be made by Seller and is intended also as a complete and exclusive statement of the terms and said warranty.

THIS WARRANTY IS IN LIEU OF ALL OTHER WARRANTIES, EXPRESS OR IMPLIED, INCLUDING ANY WARRANTY OF MERCHANTABILITY, OR FITNESS FOR A PARTICULAR PURPOSE. THERE ARE NO WARRANTIES WHICH EXTEND BEYOND THOSE SET FORTH HEREIN.

